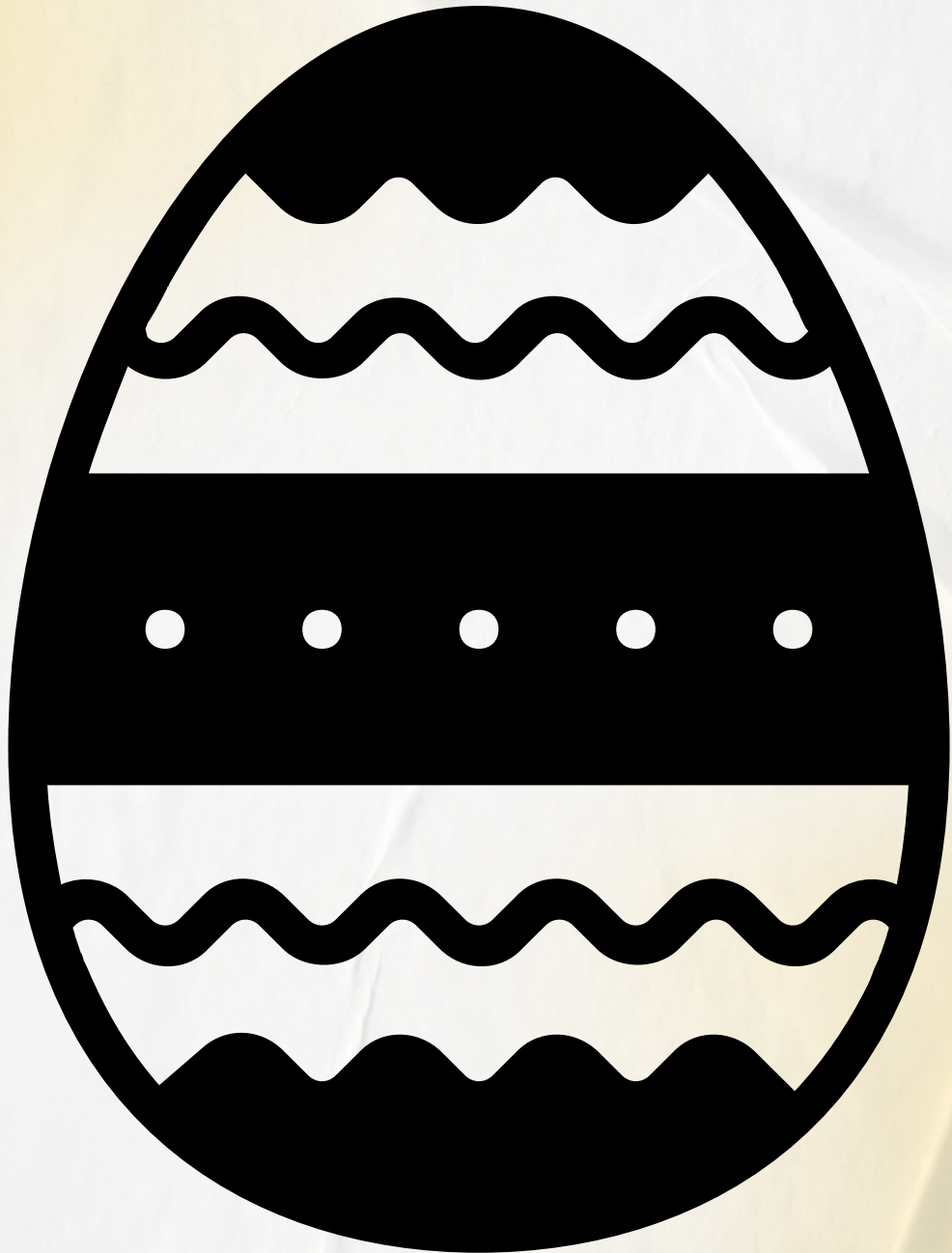




SANDYPINES
RECREATIONAL COMMUNITY

FOOTPRINTS

IN THE SAND



APRIL 2026

PHONE NUMBERS

Member Service 616.896.8315
 Nichole MilbockerExt. 100

Fax Number..... 616.896.7409
MemberService@SandyPines.com

Administration

Jeff..... Ext. 105
jeff@sandypines.com

Kimberly Ext. 109
kim@sandypines.com

Park Inspector

Jim Buchanan &
 Steve Helmer..... 616.896.7286
inspector@sandypines.com
jimb@sandypines.com

Sales Office..... 616.896.8315 Ext. 118

Kent Livingston.....Ext. 114
kent@sandypines.com

Camping Office.....616.896.8315

Janele TomesExt. 103
janele@sandypines.com

Communications 616.896.8315

Ian MitchellExt. 107
ian@sandypines.com

Maintenance 616.896.8317

Ben Fifelski, Supervisor
maintenance@sandypines.com

Emergency - Pumpout..... 616.896.8317

Emergency/

Public Safety..... 616.896.9006
 Steve Deyarmond, Emergency
 Services Director
 Paul Schaaf, Security Services Manager

Fax Number..... 616.896.9182
security@sandypines.com

Park & Garden

Chet Ryan.....616.896.9334
parkgarden@sandypines.com

Recreation

Department..... 616.896.8315
 Abby Greenfield.....Ext. 800
Recreation@SandyPines.com

Lake Monterey Golf 616.896.8118

Dave Ingles, Manager
www.lakemontereygolf.com
Golf@golflmgc.com

Laundromat Hours – Open 24 Hours

ADMINISTRATIVE TEAM

Jeff Sweitzer Park President
 Kimberly Williams Finance & Accounting
 Steve Deyarmond Emergency Services
 Ben Fifelski Maintenance
 Dave Ingles Lake Monterey
 Golf Course

MANAGEMENT TEAM

Janele Tomes Camping
 Ian Mitchell Communications
 Chet Ryan..... Park & Garden Manager
 Dale Yoder Food Operations Manager
 Jim Buchanan..... Park Inspector
 Paul Schaaf Security Services
 Abby Greenfield..... Recreation

COMMITTEE CHAIRS

Finance..... Ginny Hager
 Golf Course Joe Zomerlei
 Long Range Planning..... Kevin Hager
 Rules Kelly Johnson
 Safety & Security..... Rick Ives
 Lake Study..... Valerie Troschinetz
 Library..... Patience Pike

OUR MISSION

We are dedicated to providing
 a fun and safe environment
 where families and friends
 create a lifetime of memories.



RETAIL SERVICES

BBlessed316
 Therapeutic Center..... 616-422-7909
www.messagebook.com/biz/blessed316sandypines
 Dairy Dip 616.405.5643
 Park & Garden Store 616.896.9334
 Park & Garden
 Rental Office 616.896.9888

BOARD OF DIRECTORS

Cory Berens.....(2028)
 Rick Day, Secretary(2026)
 Kolyn Giebel(2028)
 Ginny Hager, Treasurer(2027)
 Kelly Johnson(2028)
 Larry Munger(2027)
 Craig Van Beek, Chairperson(2026)
 Scot Wyman, Vice Chairperson.....(2027)
 Paul Peppel(2026)

BOARD OF DIRECTORS ~ MISSION STATEMENT ~

The Sandy Pines Board of Directors
 will provide positive leadership and
 management direction so as to ensure
 the long term viability and success of
 Sandy Pines Wilderness Trails, Inc.



PARK PRESIDENT NEWS

BY JEFF SWEITZER Jeff@SandyPines.com

As winter loosens its grip and the first hints of green begin to appear, spring arrives with a renewed sense of energy and possibility. It's the season that invites us back outdoors—where Sandy Pines comes alive with laughter, campfires flicker into the evening, and families settling into the simple rhythm of life outside.

We also look forward to celebrating Easter—a time for gathering, laughter, and making memories with family and friends. From festive activities to shared traditions, it's one of the many moments that make our Happy Place so special.

Here's to a season filled with connection, fun, and new beginnings. Welcome back, we're glad you're here.

Staffing

With the gates officially opening, our seasonal departments are busy working with Amanda in HR to ensure staffing is ready for your return. This includes the need to extend our services through the end of September.

Our teams are reviewing staffing needs to put a plan forward for extending pool, retail, and ice cream operations. Extending services will be dependent on securing staff.

We welcome back many familiar faces as each department readies itself for the start of the season. Seasonal department hours, events, and other important information are located on our calendar on our Sandy Pines website. Please check it out!

Sticker Pick-Up

Renewal stickers are (almost) ready! We will once again be placing your stickers into envelopes identified by MEMBER name and site.

When picking up stickers, members will be required to provide a signature acknowledging receipt. As in years past, only members will be permitted to pick up stickers for their specific site(s), and a Sandy Pines member card must be presented. Associates will not be permitted to pick up stickers.

Sticker Pick Up Dates:

- Starting April 13th (Monday – Friday) during normal office hours – 8:00 am – 4:00 pm
- April 18 (Saturday) - Administration Building – 8:00 am – 12:00 pm
- May 9 (Saturday) – 8:00 am – 12:00 pm starts in season Saturday Member Service office hours

Please ensure you have current boat registrations with proper boat lengths meeting the Sandy Pines Rules to

receive your boat stickers. The Sandy Pines PSO team is available to take boat measurements or answer any questions if needed. Reminder that measurements are from Bow to Stern at the longest points. Any discrepancies will prohibit boat stickers from being picked up.

If you have any sticker pick-up questions, please contact Member Service.

If stickers become available prior to April 13th, we will communicate with a RAVE and a social media alert.

We are excited to see the park buzzing with golf carts and activities as we open for another blessed season.

Board Meeting

We invite you to join us for the first Board of Directors meeting of the season on Friday, April 17, from 6:00 pm to 7:30 pm at the North Shore Center.

It has been a long and productive off-season, and we will be sharing many important updates.

The 2026 Town Hall schedule will be communicated at the board meeting. Town Hall meetings in 2026 will focus on the Capital Investment Project and Lake Updates.

Continued on Page 4



BIGGBY COFFEE
BIGGBY makes it better

BOGO 50% off
any size
specialty beverage

474735020013

DRIVE THRU

B
BIGGBY COFFEE

Expires 12/01/2026
Applies to any favorite latte, creme freeze smoothie, tea latte, hot chocolate, mocktail, sweet foam cold brew, or BIGGBY® Blast up to 24oz. 50% off beverage is of equal or lesser value. Valid for single use, in store only. Good at participating BIGGBY® COFFEE® locations. Cannot be combined with any other offer - including the BIGGBY® card loyalty program. For franchise information visit biggbyfranchising.com.

Park President / Continued From Page 3

We always welcome member input. Please submit topic suggestions through the write-in question process, or feel free to stop by my office or reach out via email.

EGLE Structure Letter & Rules Updates

The long-awaited EGLE Structures letter has been released. EGLE invited numerous campgrounds throughout Michigan to take part in a stakeholder committee to discuss recommendations, updates, and changes to the current 2010 structures letter. The stakeholder meeting(s) concluded in the Fall of 2025 with the expectation of receiving a new EGLE letter by January 2026. This would allow Sandy Pines to work with our Rules Committee and Board of Directors during the off-season to prep for and update any Sandy Pines Rules starting in April 2026.

With the release of the letter not taking place until March 2026, it will take additional time for Sandy Pines to adjust its rules. Our target to have these updates implemented is May or June 2026.

We appreciate your understanding and patience in allowing us to follow our committed process for rule updates and changes. Our team worked hard with EGLE and others to receive better clarification on some of the grey areas as well as push for favorable changes for Sandy Pines and other campgrounds statewide.

The updated letter can be located at our Park Inspector's section of our website at <https://sandypines.com/park-inspector/>. More information will be communicated at our April Board meeting.

Capital Investment Plan

With the expiration of the 10-Year Capital Reserve coming at the end of our 2027 season, the Capital Investment Plan will be the primary focus for 2026.

During the off-season, the cross-functional team of operations, finance committee, and long-range planning committee representatives, board liaison, and Wightman Engineering put much time, effort, and resources into reviewing projects, estimated costs, and timing.

The first review with the board will take place this month. Feedback will be presented to the cross-functional team for further tweaks.

This is a critical time for our community to invest in our future. The first presentation to our members is targeted for early May 2026. Stay tuned.

Survey results are posted on our Sandy Pines website. <https://sandypines.com/wp-content/uploads/Community-Asset-Survey-Full-Results.pdf>

Please review at your convenience to better understand the informational updates, presentations, and data that we will present and communicate throughout this season.

You can find those survey results and other Capital Investment Fund Information on our website. Head to <https://sandypines.com/finance/>, and scroll down to the Capital Investment Fund Information section.

Keystone Propane

Sandy Pines members now have until the end of August 2026 to decide on their propane needs if you are a customer of Keystone Propane.

If you are not aware, Keystone Propane, a current provider to many members in the park, sent a letter on March 9, 2026, communicating their plan to no longer service Sandy Pines effective May 11, 2026. They also communicated that starting May 12, 2026, they will be removing their Keystone Propane tanks from the park.

We have received many calls from members to help with this situation. A survey sent in March shows close to 200 members being impacted. On March 24, 2026, we were able to meet with Keystone Propane leadership to discuss this situation. As an outcome of our meeting, the removal of tanks will not take place until the end of August 2026. Keystone Propane is allowing members to purchase propane tanks to secure the tank and the propane inside the tank.

Members now have additional time to secure new service. During our April Work Session with the Board, the park will present propane options to communicate to our members. Stay tuned for additional information.

Happy Easter

Happy Easter to our blessed Sandy Pines community! This month, we celebrate the incredible gift of love and hope—that Christ died on the cross to save us from our sins and rose again to offer us new life in the Kingdom of Heaven. Through Him, we are given grace, renewal, and the promise of eternal life.

May this Easter and every day fill your hearts with peace, joy, and a deeper sense of faith.

From our Board of Directors, staff, my family, and me, to all of you at Sandy Pines, Happy Easter!

Welcome back and God Bless!

HE IS RISEN! HE IS RISEN INDEED!

MEMBER SERVICE NEWS

BY NICHOLE MILBOCKER MemberService@SandyPines.com

Office Hours

Monday – Friday: 8 am to 4 pm
Saturday & Sunday: Closed

Welcome back, Sandy Pines friends! It is nice to welcome back all your smiling, happy faces. As the season kicks off, here are a few helpful reminders and important dates.

Important Dates

April 1 Docks may go back in Lake Monterey
April 1 Pavilion Rental open for the season
April 1 Mailroom Reopens
April 3 Good Friday
April 3 Administration Office Closed
April 5 Easter
April 13 Sticker Pick-Up Begins | Monday-Friday
8am-12pm at Member Service
April 15 All Gates Open & Water Turns on
April 15 Water Softener Deliveries Begin
April 15 All CC's are open for the season
April 17 Board of Directors Meeting
April 18 Sticker Pick-Up | 8am-12pm at Member Service
April 22 Earth Day
April 25 Member Account Balances & Quarterlies Due

Renewal Stickers

Renewal stickers will be available for pick-up starting Monday, April 13. Only primary members are permitted to pick up stickers. So please bring your member card or a valid ID with you to pick up.

Boat Registrations

All members with motorized watercraft expiring with the state must bring in an updated registration before stickers will be released. Only motorized watercraft need state registration. All registrations are due by Monday, June 1.

Mailroom

Any members looking for mail service/package deliveries for the season, please inquire about a mailbox rental with the Member Service Office. Only members with a rental can access the mailroom for all such deliveries.

Storage Rentals

Have storage needs? Check out the bullpen! These are outdoor storage spaces available for use. This storage area is a secure spot with PIN code access to only those with rentals. Reach out now to ensure a spot as they fill up fast. All rentals are reserved on a first come first serve basis. Spots may not be reserved for future dates; rental begins day of.

Pavilion Rentals

Looking for a gathering spot for your next party, baby shower, graduation, or work event, don't worry, we have you covered. Check out one of our indoor or outdoor pavilion spaces for your event. Reach out to Member Service Office 616-896-8315 or by email at memberservice@sandypines.com for availability and pricing. Maybe you are looking for a larger event space for a wedding, company gathering or meeting perhaps check out what the North Shore Center has to offer. For all North Shore Center inquiries please reach out to abby@sandypines.com and she will be happy to assist you.

BOARD OF DIRECTORS UPDATE

BY CRAIG VAN BEEK BoardOfDirectors@SandyPines.com

As we begin to turn the corner toward spring and the water being turned on, it is always exciting to see the park come back to life after the quiet winter months. I wanted to take a moment to share a few updates from the Board of Directors.

Lake Levels

One topic that has been on many members' minds this spring is the lake level. With the amount of precipitation and snowmelt we experienced over the winter, the water level is currently nearing the spillway.

Our lake continues to be one of the Board's top priorities. We are actively monitoring the situation and addressing the issues we face with both the lake and the shoreline. We know how important the lake is to the overall experience at Sandy Pines, and we remain committed to continuing improvements that will help protect and maintain it for years to come.

Capital Investment Vote

Another important item coming up is the Capital Investment

Vote. Over the past year, the Board of Directors and administration have been evaluating the long-term needs of the park.

Continued on Page 6

CRS WATER
Subsidiary of Certified Repair Services

Larry Lane/Owner
Sandy Pines Lot K360

Were The Original Water Softener People
Our Water Softeners Have All New Resin Inside
Water Heaters - Plumbing - Electrical
Heating/Cooling - Misc. Repairs

(616) 797-9998

3350 Chicago Dr SW, Grandville, MI 49418 www.crswater.com

Board News / Continued From Page 5

Many of our buildings and infrastructure are now more than 50 years old. As construction and material costs continue to rise, it is important that we plan carefully for the future of Sandy Pines. The upcoming vote will give members the opportunity to ensure that the park continues to be maintained and improved for generations to come.

Extended Fall Season

At the end of last season, we heard many members express interest in extending park hours later into the fall so families can enjoy more time at Sandy Pines before the season closes.

We have taken that feedback seriously, and plans are being

made to extend the park schedule at the end of summer this year. Our goal is to provide more opportunities for members to enjoy the park while still balancing the operational needs of the facilities and staff.

Closing Thoughts

As always, the Board of Directors appreciates the engagement and input of our members. Sandy Pines is a special place because of the community that surrounds it, and your feedback helps shape the future of the park.

We look forward to seeing everyone back soon and enjoying another wonderful season together at Sandy Pines.

FINANCE & ACCOUNTING NEWS

BY KIMBERLY WILLIAMS Kim@SandyPines.com

Welcome to spring as we look ahead to the opening of another great season at Sandy Pines!

Monthly member statements are distributed via email and/or mail on the first business day of each month. The April 2026 statements are scheduled to be printed and emailed on Wednesday, April 1, 2026, or Thursday, April 2, 2026.

April also marks the conclusion of the Annual Dues and Assessments payment cycle, including the six-month payment plan. All remaining balances were due in full by March 25, 2026.

Your April 1, 2026, statement will include renewal charges specific to your site for the 2026 season. These may include Prox card renewals, boat and golf cart stickers, boat services, pump-out plan requests, as well as your quarterly electric assessment and state unit tax.

Renewal information was made available in the Dynamics Member Portal by March 1, 2026, for your review and approval. These charges will be reflected on your April statement and are due by April 25, 2026. Stickers will be available for pick-up during regular Administration office hours.

Financial Statements & Budget Planning

In April, the Sandy Pines Board of Directors and Finance Committee will meet to review and approve financial statements for January through March 2026. Once approved, these statements will be available on the Sandy Pines website at www.sandypines.com/finance.

In May, the Board and Finance Committee will begin their initial review of the preliminary budget for the 2026–2027 season.

2027 Budgeting

This season will be focused on the future and continued investment in Sandy Pines.

Over the off-season, the Capital Investment team, Board of Directors, management team, and external experts have

worked diligently to evaluate the impact of the upcoming expiration of the current Capital Reserve Fund and to plan for the continued protection of our members' long-term investment.

Below is a brief overview outlining the key differences between capital expenses and operating expenses.

Understanding How We Invest in Our Community

Operating vs. Capital Expenses

As we prepare for the upcoming capital assessment vote, we wanted to take a moment to explain how different types of expenses are handled and why this matters for the long-term health of our community.

Two Types of Expenses: What's the Difference?

In simple terms, the expenses that support operations fall into two categories:

Operating Expenses (Day-to-Day Costs)

These are the routine costs required to keep everything running smoothly each season.

Examples include:

- Utilities (electric, water)
- Routine maintenance and repairs
- Supplies and seasonal operations
- Payroll and services

These costs are paid within the annual budget and used in the current year.

Capital Expenses (Long-Term Investments)

Capital expenses are investments in the future of our community.

Examples include:

- Road improvements
- Equipment replacements

Continued on Page 7

Finance / Continued From Page 6

- Building upgrades
- Infrastructure projects (water, electric, irrigation systems)

These are planned and funded over time, often through reserves or capital assessments.

<i>Operating Expenditure</i>	vs	<i>Capital Expenditure</i>
Day-to-day costs that keep the business moving		Larger, one-time purchase that provides long-term value
Examples of Operating Expense:		Examples of Capital Expense:
<ul style="list-style-type: none"> * Salaries * Lease costs * Utilities * Patchwork and temporary repair to roads * Purchase of smaller computer items (laptop < \$2,500) * Software subscriptions 		<ul style="list-style-type: none"> * Rebuilding a Convenience Center * Replacement or major renovation of General Buildings (Dairy Dip, Retail, Rec Station) * Replacing Machinery * Replacing Roads * Replacing Large Computer Equipment * Purchase of Vehicles
Treated as an expense - hits the profit and loss statement right away.		Treated as an asset - depreciated over time based on useful life
Easier hit on short-term cash, flexible, but doesn't add to value of assets.		Hits cash flow up front but provides for long-term growth and value
Bottom Line: OpEx = Runs the business today		Bottom Line: CapEx = Investment in the future

How to read this:

- Operating = Keeps things running today
- Capital = Invests in tomorrow

How are these costs funded?

<i>Operational Funding</i>	vs	<i>Capital Projects Funding</i>
Annual Operational Dues		Annual Capital Assessment Current Capital Reserve Fund Assessment (expiring 9/30/2026)

Key Considerations:

- Annual Operational Dues are considered taxable income to Sandy Pines Wilderness Trails.
- The Bylaws permit up to 2.5% of the current annual operating budget to be transferred from Operations Funding to Capital Funding. It should be noted that these transferred funds remain taxable, as they originate from operational revenue.
- Capital Assessments are exempt from tax consideration.
- Capital Funding must be used exclusively for capital projects and cannot be transferred back to Operations.

Safe Harbor Threshold

Sandy Pines and Lake Monterey Golf Course Safe Harbor Threshold set with the IRS: \$2,500

To help guide financial decisions, we follow a standard accounting practice:

- Items under \$2,500 → typically treated as operating expenses
- Items over \$2,500 → generally considered capital investments

This approach helps:

- Simplify smaller purchases
- Ensure larger investments are properly planned and tracked

Why This Matters for the Capital Assessment

Capital assessments are not about day-to-day operations. They are about protecting and improving the long-term value of the park and our community.

By separating these expenses, we are able to:

- Maintain a balanced annual budget
- Plan responsibly for large future projects
- Avoid unexpected financial strain, especially when maintaining aging assets
- Ensure fairness across current and future members

Our Commitment

We remain committed to:

- Transparency and thoughtful planning
- Responsible financial stewardship
- Investing in the future sustainability of the park and community

We encourage you to stay informed through ongoing Capital Investment Campaign updates and to reach out with any questions as we approach the upcoming annual vote.

We look forward to welcoming you back for another wonderful season at Sandy Pines!

Follow Us on Social Media!

GET CONNECTED FOR ALL OF OUR LATEST NEWS & UPDATES!

on Facebook @SandyPinesWildernessTrails

on Instagram @SandyPinesOfficial

on YouTube @SandyPinesWT

on Twitter @SandyPinesWT

RECREATION NEWS

BY ABBY GREENFIELD Abby@SandyPines.com

Upcoming Season

We are beyond excited for the weather to start warming up—it's a sure sign that summer is right around the corner. The Recreation Department has a full lineup of events and activities planned, including themed weeks and weekends throughout the season.

Be sure to check out the online calendar for the most up-to-date schedule.

Hiring Needs

We are still looking to hire lifeguards for the upcoming season. If you—or someone you know—is 16 years or older and interested in lifeguarding this summer, please direct them to apply on our website.

We are also looking for team members who are available on weekends throughout August. Our goal is to have the Water Park and Happy Shack open Friday through Sunday through the end of August. This will depend on staffing levels and weather conditions.

If you are interested and available, we encourage you to apply.

Craft & Vendor Shows

We are happy to announce that the Memorial Day Weekend Craft & Vendor Show is fully booked, featuring 70 booths and over 50 unique vendors.

The show will take place on Saturday, May 23 from 12:00–6:00 pm, with food trucks and live music throughout the day. As the event approaches, we will share a vendor map to help you find your favorite booths and discover new ones.

If you are interested in joining the waitlist for the Memorial Day show or applying for the remaining three shows this season, please complete an application on our website.

There are still a limited number of openings available for the Kids Craft & Vendor Show. Booth space is free for youth participants, as long as the child creates and sells their own items. Spots are limited, so be sure to register soon.

Spring Kickoff Event

We will be hosting a Spring Kickoff on May 2 at the golf

course. The event will include games, activities, a succulent sale, plant pot decorating, and a cornhole tournament.

Be sure to join us for the festivities and participate in the social media contest that will follow. Visit the calendar for full event details.

Memorial Day Service

We are currently looking for a guest speaker for this year's Memorial Day Service.

We are hoping to connect with a veteran who would be willing to share their story and reflect on what Memorial Day means to them. This is a meaningful part of the service, and we are looking for someone who can speak from the heart and help set the tone for the morning.

The service will take place on Memorial Day morning at the Sandy Pines Veteran's Memorial.

You do not need to be a Sandy Pines member, but we would love to highlight someone from within our community if possible.

If you are interested, or know someone who would be a great fit, please reach out to Abby at Abby@SandyPines.com.

We are grateful for all who have served and look forward to honoring them together again this year.

Memorial Day Blood Drive

Give back this Memorial Day Weekend by participating in our Blood Drive at Sandy Pines. Donating blood is a simple way to make a meaningful impact and support those in need.

The drive will take place on Saturday, May 23 from 10:00 am to 3:00 pm at the Phase 1 Indoor Pavilion. All donors will receive a \$25 e-gift card as a thank you.

Appointments are preferred and tend to fill quickly, so we encourage you to reserve your spot ahead of time.

Sign up here: https://donateblood.versiti.org/donor/schedules/drive_schedule/11637774

Sponsored by Versiti Blood Centers.

hellos are better in
person. that's why
we're local.

simple human sense



Dorr • 616.681.9959

Auto-Owners
INSURANCE

COMMUNICATIONS NEWS

BY IAN MITCHELL ian@SandyPines.com

2026 Wall Calendars Available

Our 2026 Sandy Pines Wall Calendars are now available for purchase!

If you haven't picked one up yet, now's the time—we still have some available, but they won't last forever. Calendars are \$12 and can be picked up at Member Service or Public Safety.

A big thank you to everyone who submitted photos this year. The calendar turned out great, and we love showcasing the community through your lens.

Winners of the photo contest have been contacted and can stop by to pick up their complimentary calendar.

Weekend Flyer Returns

A friendly reminder that the Weekend Flyer will return for Memorial Day Weekend and run through Labor Day Weekend.

If you are looking to plan your activities for the 2026 season, all events are now listed on the online calendar. The Recreation team has done a great job building out this year's schedule, including many great events during the week.

Be sure to check it out: <https://sandypines.com/calendar/>

Spring Kickoff + Social Media Challenge

As mentioned in the Recreation section, we will be hosting our Spring Kickoff on Saturday, May 2 from 1:00 – 4:00 PM at Lake Monterey Golf Course.

We are also running a fun social media challenge on our official Sandy Pines Facebook page for the event.

How It Works:

1. Decorate your plant pot at Spring Kickoff
2. Take your plant home and style it in your "happy place" — porch, camper, patio, garden, by the lake, etc.
3. Post a photo on Facebook or Instagram
4. Tag Sandy Pines and use #SandyPinesSpringKickoff
5. Encourage friends to like your photo

Be sure to check out full event details and more information about the challenge here: <https://sandypines.com/event/spring-kickoff/>

Prizes will be announced as we get closer to the event!

Help Us Grow on Social Media

Speaking of social media, we would love your help!

If you are on Facebook and love Sandy Pines, please consider leaving us a review. Your feedback and testimonials from within the community mean a lot and help others learn more about what makes Sandy Pines special.

Leave a review here:

<https://www.facebook.com/SandyPinesWildernessTrails/reviews>

If you are not already following us, we recommend giving us a follow as well. We regularly share updates, photos, and videos from around the park.

Photos & Videos

The Communications team is planning to capture even more photos and videos around the park this season.

We will do our best to stay out of your way, but keep an eye out for us while we are out and about. We will be wearing a media badge so you can easily identify us.

As always, if you have photos or videos that showcase Sandy Pines, we would love to see them. The best way to share is by emailing original files for the highest quality.

Send submissions anytime to: Communications@SandyPines.com

You can also tag us on social media!

PARK INSPECTOR NEWS

BY JIM BUCHANAN Inspector@SandyPines.com

Happy Spring to all of you! We hope and pray you had a great off-season. As we get ready to welcome you back to the park, we would like to share a few important updates.

Permits & State Guidance

We have been in communication with the State and have received a letter confirming what is allowed on an RV site in a seasonal RV park.

After submitting your permit form, we will reach out within the required 5–7 day timeframe outlined in the Rule Book to inform you if your project has been approved.

Please make sure your form is filled out completely so we can process and approve it as quickly as possible.

Building Cards & Project Requirements

Please ensure that your Building Card is placed in a visible location from the road before any work begins.

If a project is started without approval or without a Building Card displayed prior to the start of work, you may be subject to a fine.

We inspect every job, so please remember to return your Building Card once your project is complete. You will have 60 days to complete your project.

Important Reminders

- All work from last year should now be completed
- A new permit is required for any work being done this year

If you have any questions, please contact our office. You can also reference the Rule Book for additional information.

Thank you!

FOOD SERVICE NEWS

BY DALE YODER Dale@SandyPines.com

Spring is here, and that means one thing... food season is right around the corner at Sandy Pines.

We're getting ready to fire things back up across the park, and there's a lot to look forward to—from opening weekends to hiring opportunities and everything in between.

We're Hiring for Summer

If you or someone you know is looking for a fun summer job, we're currently hiring across all food service locations:

- **Country Café** (cooks, counter help, prep)
- **Country Store** (cashiers, stocking)
- **Dairy Dip** (multiple positions)

Applications are available online or through the administration office. It's a great way to be part of the summer and work right here in our happy place.

Dairy Dip Opening Soon

The Dairy Dip is back soon, and it's always one of the sure signs that the season has officially begun.

- Open Interviews: Week of April 20 | 3:00–5:00 pm
- Opening Day: Friday, May 1 at 5:00 pm

- Hours: Open weekends through Memorial Day

Country Café Returns

The Country Café will be opening for a special early-season weekend to get things started:

- **April 17, 18, and 19**
- **8:00 am – 11:00 am**

We're also still looking to add to the team, so if you're interested in cooking, prep, or counter service, we'd love to have you.

Country Store Opening

The Country Store will also be opening for the season on:

- **April 17 (weekend hours to start)**

We're currently hiring for store help, including running the register and stocking shelves as needed.

As more members return and the park comes back to life, all locations will begin expanding hours and move toward full daily operations.

Safe travels back to Sandy Pines—we'll see you soon.

SECURITY NEWS

BY PAUL SCHAAF Paul@SandyPines.com

Office Hours

Emergency Security Staff is onsite 24 hours/day.

February 2026 Call Stats

In January 2026, Public Safety responded to 25 calls for service. The breakdown of the calls are:

Assist.....	6
Damage to Property	1
Health and Safety.....	1
Medical	1
Open Door.....	12
Suspicious	2
Traffic.....	1
Watercraft.....	1

New Season

The 2026 season is almost upon us. This is an exciting time of year. Let's all work together to make this a great season.

Parking

Overflow parking is provided for extra parking spots when your site is already full. These are the areas that you can use for overnight parking if you have extra vehicles. If the area is not listed as designated overflow, it is not meant for overnight parking.

Overflow Parking:

- Overflow parking is provided for members to park their vehicles
- Overflow parking is not intended for the storage or sale of vehicles or equipment.
- Boats and trailers may not be stored overnight in overflow parking areas.
- The Park reserves the right to permit parking in areas when needed.

Phase 1:

- Area north of the Phase 1 ball field in front of the horseshoe pit area.
- Southeast corner of Tee Pee (outdoor shelter) area next to drive.
- Tree Haven Circle
- Beechnut Circle
- Sunset Circle
- Monterey Lake Circle

Phase 2:

- Site 951 (behind Convenience Center #4)
- Bay Breeze Circle

Continued on Page 11

Security / Continued From Page 10

Phase 3:

1. Area at the end of Monterey Bay Trail northeast of the outdoor picnic shelter.
2. From Site 1000 to the playground.
3. From CC#5 to Site 1006

Phase 4:

1. Area across the street from the boat launch area.
2. Area north of the Dam on the east side of the road.
3. East of CC#10 - along Chippewa Trail on the East side and North of Iroquois Trail.
4. The inner curve between Cove Drive and Iroquois Trail across from (N484 - K16).
5. Pontiac Court 23
6. Island View Court
7. Back side of CC#8 between the parking lot and row of pines.

8. Circle areas from Site N47 & N44 E.

Phase 5:

1. The inner curve between Cove Drive and Iroquois Trail (N484 - K16).
2. Across from CC #11 between K84 & K88
3. Under the Power lines
4. Shawnee Circle
5. Sauk Circle
6. Cherokee Circle
7. Fox Circle
8. Fox Circle from site K-267 to well house.

Phase 6:

1. Perimeter areas across from site D49 to D121 and D161 to D167 not to exceed farther than 30 feet from the Park roadway.

SAFETY NEWS

BY STEVE DEYARMOND Steve@SandyPines.com

Severe Weather

Whether you believe climate change is increasing severe storms or not, the reality is that high wind events, straight-line winds, and tornadoes can happen here. We have had storms in the past and will most likely have severe storms in the future.

Mother Nature is out of our control. You, your family, and the park can only prepare for such events.

The Sandy Pines Tornado – May 15, 2025

Around 10:30 pm on May 15, 2025, an EF1 tornado traveled over Sandy Pines, heading northeast toward Dorr. <https://www.youtube.com/watch?v=QGT1isWMhN8>

Limited damage occurred to trees, recreational units, vehicles, and park facilities. The Sandy Pines Maintenance team and tree service contractors completed the cleanup within a few days. Many members utilized the North Shore Center and Phase 3 storm shelters during the storm. No injuries or fatalities occurred.

It was a night of high winds, lightning, and heavy rain—and one in which we were spared from what could have been far worse.

A direct hit in our community could result in millions of dollars in damage, displaced residents, injuries, or even loss of life. RV parks are especially vulnerable. Camping units can be destroyed, debris fields can spread quickly, and recovery may take months or even years depending on the severity.

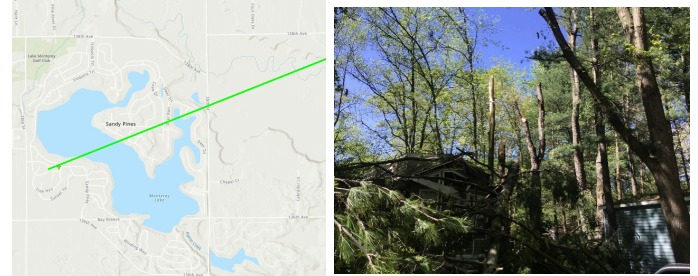
Even after a storm, repairs and replacements can be delayed due to limited availability of contractors and park model units. We have had several near misses in the past decade. This event serves as a clear reminder that severe weather can happen here.

We are grateful for the response from Allegan County Central Dispatch and for those who took warnings seriously and sought shelter.

Please take time to prepare:

- Know where you will go for shelter
- Have a plan with your family
- Act quickly when warnings are issued

Do not shelter in your recreational vehicle or park model trailer.



<https://apps.dat.noaa.gov/stormdamage/damageviewer>

Shelter Options

Several options exist for shelter during severe weather. If you live locally and severe weather is forecasted, consider leaving the park ahead of time and returning to your home residence.

If you do not live locally, you may go to one of the engineered tornado safe rooms:

- **North Shore Center**
- **Phase 3 storm shelter bathrooms**

If you do not have time to reach a safe room, go to the nearest bathroom in your phase. While not designed as a tornado

Continued on Page 12

Safety News / Continued From Page 11

shelter, it may provide more protection than a recreational vehicle.

Your predetermined shelter should be within a **5-minute walking distance** of your site.

Please take time to prepare:

- Know where you will go for shelter
- Have a plan with your family
- Seek shelter immediately when warnings are issued

For a better understanding of storm impact, you can review the following resources:

NOAA Damage Viewer:

<https://apps.dat.noaa.gov/stormdamage/damageviewer>

Gaylord Tornado Example (Nottingham Forest Mobile Home Park): <https://www.youtube.com/watch?v=YRqiqPmwF34>

Outdoor Warning Sirens & Severe Weather Safety When do the sirens sound?

Outdoor warning sirens are tested on the fourth Friday of each month at 11:00 am by Allegan County Central Dispatch. Any activation outside of that test time means a warning has been issued and the situation is life-threatening.

If you hear the siren, **seek shelter immediately.**

How long do they sound?

Typically, the siren will sound for 3 minutes. It will not sound continuously during the event. Just because the siren stops does not mean the threat has ended. Additional activations indicate the threat is still present.

Remain sheltered until staff provide an all clear.

Why is shelter so important?

Recreational vehicles and park models fail extremely poorly in severe weather and high wind events.

- Camping units can be overturned, lifted into the air, or crushed by falling trees
- Flying debris can easily penetrate walls and windows
- Units are not anchored like permanent homes

The statistics:

- 72% of tornado-related fatalities occur in homes
- 53–54% of those fatalities occur in manufactured homes
- People sheltering in manufactured homes are 15–20 times more likely to be killed compared to those in permanent homes

Experts agree that sheltering in a recreational unit during a severe storm is extremely unsafe.

Why can't I always hear the siren indoors?

Sirens are an outdoor warning system designed to alert people who are outside. They are not meant to be your only alert method.

You should rely on multiple sources:

- NOAA Weather Radio
- RAVE alerts (text/email)
- TV and radio broadcasts
- Mobile weather apps
- Your own observations

How can I receive alerts inside my camping unit?

Every camping unit should have a portable NOAA Weather Radio, which can wake you up if a warning is issued.

Sandy Pines also uses the RAVE alert system to send notifications. To receive alerts, your contact information must be current in the membership database.

What if a warning is issued but the siren is not sounding?

Take shelter anyway.

Do not rely on a single source. If any alert system, media report, or your own observations indicate a threat, seek shelter immediately.

Should I call Public Safety to ask why the siren is sounding?

No. During emergencies, Public Safety staff are handling active situations and emergency calls. Calling to ask about the siren may prevent someone else from getting help.

Continued on Page 13

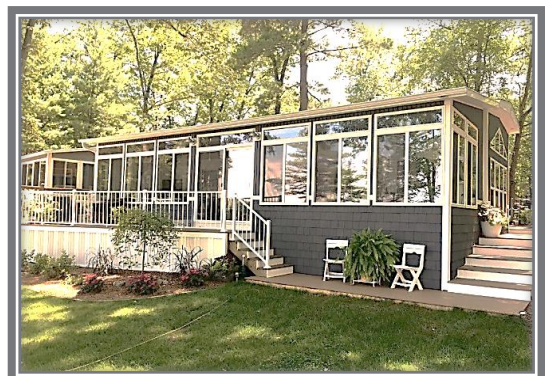


EXTERIOR REMODELING

Westhousehome.com

Phone #:616-877-4706

Specializing in- Screen Enclosures, Sunrooms, Open covers, Vinyl Siding, Windows, Decks



Safety / Continued From Page 12

If you hear the siren and it is not the scheduled monthly test, seek shelter immediately.

What about pets?

Pets are allowed in shelters but must be in a crate or carrier.

- Space is limited
- Owners are responsible for their pets
- Pets should remain contained at all times

If necessary, make alternate plans ahead of time.

In emergency situations, human life takes priority.

Final Reminder

Every year, people are injured or killed during severe weather events despite advance warning. Some did not hear the warning. Others heard it but did not take action.

When a warning is issued, you must make the decision to seek shelter immediately. It may be the most important decision you ever make.

Do not shelter in your recreational unit.

Lake Levels

Mother Nature has returned the lake to within six inches of the spillway because of spring runoff and rain. We start the season with a good lake level. Mother Nature has done its job.

The question is frequently asked each summer: What is happening with the lake and the level of water in the lake? This question has been asked since the conception and build of Monterey Lake. Where is all the water going? Like a trick magician, it is happening right before your eyes: evaporation.

The recorded history of Monterey Lake shows a trend of lake levels decreasing starting in July during many drought years. The rate of decrease depends on rain and Mother Nature. Temperature, wind speed, humidity, and even day versus night all factor into the equation.

Average wind speeds in June, July, and August are commonly 7–12 mph. Daytime humidity (6:00 am–10:00 pm) in June, July, and August is typically 60–75%, and nighttime humidity (10:00 pm–6:00 am) is 70–80%. Average daytime temperatures in June, July, and August are 76 to 83 degrees, and nighttime temperatures are 55 to 64 degrees. The surface area of the lake is 240 acres.

If you want to make your own assessment, you can visit: <https://www.omnicalculator.com/physics/evaporation-rate>
Enter the information yourself to estimate the evaporation rate.

The following evaporative water loss is based on a lake surface of 240 acres, wind speed of 7 mph, daytime temperature of 82, and humidity of 65%. Nighttime is based on the same lake surface, air speed of 7 mph, temperature of 59, and humidity of 70%. These are conservative values.

Total gallons combined of well pumps contributing to the lake per:

1. Minute = 1,300	Total loss from evaporation per minute = 2,363
2. Hour = 78,000	Total loss from evaporation per hour = 141,760
3. Day = 1,872,000	Total loss from evaporation per day = 3,402,240

Total evaporation loss is calculated during daytime hours (6:00 am–10:00 pm / 16 hours / 960 minutes) and nighttime hours (10:00 pm–6:00 am / 8 hours / 480 minutes), when temperatures are cooler and humidity is higher, resulting in a lower evaporation rate.

Daytime loss:

2,972 gallons x 960 minutes = 2,853,120 gallons evaporated (6:00 am–10:00 pm)

Nighttime loss:

1,144 gallons x 480 minutes = 549,120 gallons evaporated (10:00 pm–6:00 am)

Daily average loss to evaporation: 3,402,240 gallons

Total lake pump contribution of water: 1,872,000 gallons

Net daily loss to evaporation: 1,530,240 gallons

Based on the current estimated loss from evaporation and the augmentation of water from lake pumps and wells, we are at an estimated negative daily loss of 1,530,240 gallons during June, July, and August. This calculation does not take into account groundwater seepage. Groundwater levels also decrease during drought conditions.

SIGN UP TO HAVE THE FOOTPRINTS IN THE SAND

DIGITAL MAGAZINE SENT TO YOUR EMAIL!



SCAN THE QR CODE ABOVE OR HEAD
TO SANDYPINES.COM/ FOOTPRINTS
TO SUBSCRIBE!

YOU MAY UNSUBSCRIBE AT ANY TIME

SALES NEWS

BY KENT LIVINGSTON Kent@SandyPines.com

Spring is Here and So is the Excitement at Sandy Pines

You can feel it in the air—spring is here, and with it comes the excitement of another season at Sandy Pines. As the weather begins to warm and we get closer to that much-anticipated moment when the water is turned on, there's a renewed energy throughout the community.

This is the time of year when families start planning weekends, making memories, and, for many, beginning the search for their own place here.

A Busy Start to the Season

Along with the changing season, we're seeing an increase in calls, messages, and interest from people looking to become part of what makes Sandy Pines so special. Whether it's first-time buyers exploring ownership or current members considering an upgrade, the spring market is already starting to take shape.

What Buyers Are Looking For

One thing I always share with prospective buyers is that no two purchases look exactly the same. Everyone comes in with a different vision, and several key factors tend to guide their decision.

Price is often the starting point, but it's rarely the only consideration. Buyers also look closely at what's included with each site—furnishings, outdoor setups, golf carts, and additional features can all add value and convenience.

The membership itself is another important piece. At Sandy Pines, ownership is about more than just the unit—it's about access to the lifestyle, amenities, and sense of community that keeps people coming back year after year.

Location within the park also plays a major role. Whether someone is drawn to waterfront views, quiet wooded settings, or being close to activities and amenities, each area offers something a little different.

And finally, **budget planning** is key. For many buyers, this is a second home or weekend getaway, so finding the right financial fit while still checking those "must-have" boxes is an important part of the process.

Opportunities Are Opening Up

As we head into the season, new listings are becoming available, and opportunities are opening up. If you or someone you know has been thinking about making Sandy Pines your home away from home, now is a great time to start the conversation.

Thinking About Selling?

For those considering listing their property, we highly recommend taking a little extra time to prepare your site before going to market. Having the lot cleaned up, the interior thoroughly cleaned, and the space spruced up can make a significant difference—especially when it comes to photos.

First impressions matter. A well-presented property helps attract more interest and puts you in the best position for a successful sale.

We're Here to Help

I'm always happy to answer questions, walk you through the process, or help you find the right fit for your needs. Here's to warmer days, open water, and another great season ahead at Sandy Pines.

Edward Jones

> edwardjones.com | Member SIPC



Honoring all workers

Let's help keep your investments working as hard as you do.



David W Lucas
Financial Advisor
1743 142nd Ave
Suite 3
Dorr, MI 49323
616-729-1582

EJB-9811F-A-E-DA AECSPAD 25945337



Scan the code
with the camera
on your phone

LAKE MONTEREY GOLF NEWS

BY DAVID INGLES David@GolfLMGC.com

Golf season has arrived!

Although it should be celebrated year-round, this month we especially celebrate our risen Savior and Easter. We look forward to spending time with family and friends. Dave and Tyler have been hard at work getting the equipment and golf course ready. April will be busy, and we are hoping to be blessed with some great weather.

We're looking forward to seeing everyone.

Memberships

We have updated our pricing for 2026 golf memberships on our website. Golf membership sign-ups will begin on April 1. Course Improvements

Over the winter, we completed tree removal and trimming on several holes. Don't worry—we left plenty of trouble for our golfers.

Most of the work was done to open up shots into greens and allow more sunlight onto greens and tee boxes. We do not predict any great improvement in scoring... we highly recommend getting a lesson to help with that.

You will continue to see work being done on Hole 13 throughout the season, and we are hoping to complete this renovation this year. We will also be working on Hole 17 to convert it into a par 4.

Hole 14 has received an upgrade. You will notice a new bunker wall by the green, along with improvements to the bridge in that area.

New Products

Stop by the clubhouse to check out new products and clothing. We will once again carry Yatta Golf shirts, which were a big hit last year.

We have also become a strong partner with Srixon/Cleveland. Stop in and take a look at the golf supplies they have provided.

Employees

Our team will be returning to work this month. You'll see several familiar faces and a few new ones both behind the counter and out on the course.

We can't wait to welcome everyone back to Lake Monterey Golf Course.

Golf Course Rules

Please be mindful of the following rules:

- No personal coolers or outside alcohol are allowed on the course
- Always bring your Sandy Pines member or associate card
- Knobby tires and six-seater golf carts are not permitted
- Proper golf attire is required

- * No tank tops
- * Men's shirts must have sleeves
- * Women's tops must be appropriate golf attire

- Groups of 5 or more are not allowed without prior permission
- Pace of play is very important
 - * If your group is slowing play, you may be asked to skip ahead
 - * Continued delays may result in being asked to return at a less busy time
- Each player must have their own set of clubs
 - * Rental sets are available if needed

Let's make golf enjoyable for everyone by following these rules. We appreciate your cooperation.

We're excited and looking forward to seeing everyone this spring—and to once again saying:

"Let's go golfing!"

CHAPEL NEWS

BY DAVE VAN NOORD

It's with extreme gratitude that we enter into the summer of 2026 for the Sandy Pines Lakeside Chapel. As the weather improves and the temperatures warm a bit, we anticipate some major changes to the Chapel grounds. It's very exciting to watch the process for the new addition to our building, and it's really going to be fun to see how this addition will increase opportunities for our Chapel programming. This addition is funded completely by our Chapel family. If you would like to contribute toward this addition, please go to www.sandypines.com/chapel and select giving.

As the season approaches, work is being done to complete plans for morning worship services and our evening concerts. For a complete schedule go to www.sandypines.com/chapel. We'll kick off the season on May 10 with an indoor service at the North Shore. On May 17 we move outside for a 10:00 worship service. Our first concert will be on May 24 featuring Phil Cross and Poet Voices.

Our Youth Directors, Jodi and Mikayla, are busy planning SPY (Sandy Pines Youth) and VBS, two amazing opportunities for young people and kiddos to gather, make new friends and delve into their faith and knowledge of God's purpose for their lives. SPY meets Sundays at 11:30 and VBS will take place the week of July 27-31.

I will continue Adult Bible Study Wednesdays at 10:00 in the North Shore Center. Please consider joining us.

We are so thankful for our Sandy Pines Chapel family and look forward to a great season of worship together.

Dave and Bev Van Noord



SANDY PINES
RECREATIONAL COMMUNITY
2745 136th Avenue
Hopkins, MI 49328

PRSR STD
US Postage
PAID
Grand Rapids, MI
Permit 1



Stay up to date on all things
Sandy Pines online!

www.SandyPines.com

